



THE  
BAPU PARK

A PROJECT BY BAPU BUILDCON & SILVER GROUP



## ‘ABOUT US’

**The Bapu Park** is a signature luxury skyline development by **Bapu Buildcon** in collaboration with the **Silver Group**, envisioned for those who aspire to live above the ordinary.

Comprising **234 super-premium residences**, The Bapu Park is thoughtfully designed to reflect the modern lifestyle, refined tastes and elevated living standards of today’s generation.

Crafted using high-quality construction materials and enhanced with lavish, future-ready amenities, every space at The Bapu Park exudes grandeur, comfort and sophistication. With 100% security and safety, residents enjoy complete peace of mind while experiencing an exclusive, high-end way of life.

Standing tall as one of the top-notch residential properties of Udaipur, The Bapu Park is not just a place to live, it’s a destination every discerning homeowner desires to call home.



THE  
BAPU PARK

A PROJECT BY BAPU & SILVER GROUP



THE BAPU PARK

**'WELCOME TO THE BAPU PARK'**  
A Harmonious Blend of Urban Elegance and Community Living.

\*Images shown are for representational purpose only and may differ from the actual property.



THE  
**BAPU PARK**  
A PROJECT BY BAPU & SILVER GROUP

**'MASTER BEDROOM'**  
Your Personal Haven of Luxury.

\*Images shown are for representational purpose only and may differ from the actual property.



THE  
BAPU PARK

A PROJECT BY BAPU & SILVER GROUP

## 'SPACIOUS BALCONY'

Designed for open moments, fresh air, & scenic beauty.

\*Images shown are for representational purpose only and may differ from the actual property.



THE  
**BAPU PARK**  
A PROJECT BY BAPU & SILVER GROUP



\*Images shown are for representational purpose only and may differ from the actual property.



THE  
BAPU PARK

A PROJECT BY BAPU & SILVER GROUP

## 'MODERN BEDROOM'

Cozy interiors crafted for restful living and modern ease.



THE  
BAPU PARK

A PROJECT BY BAPU & SILVER GROUP



## 'SPA-LIKE BATHROOM'

Thoughtfully designed bathrooms with modern aesthetics and superior quality.

\*Images shown are for representational purpose only and may differ from the actual property.



THE  
BAPU PARK

A PROJECT BY BAPU & SILVER GROUP

**'ATELIER DINING'**

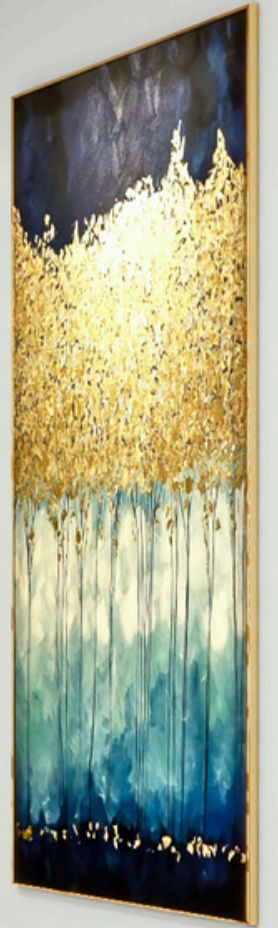
Fine interiors that elevate everyday dining into a grand affair.

\*Images shown are for representational purpose only and may differ from the actual property.



THE  
BAPU PARK

A PROJECT BY BAPU & SILVER GROUP



\*Images shown are for representational purpose only and may differ from the actual property.



THE  
BAPU PARK

A PROJECT BY BAPU & SILVER GROUP

**'THE GRAND LOBBY'**  
An entrance that mirrors the sophistication of your lifestyle.



\*Images shown are for representational purpose only and may differ from the actual property.



THE  
BARU PARK

A PROJECT BY BUKIT & SILVER GROUP



**'WELL EQUIPPED GYM AREA'**  
Premium equipment, refined interiors and a motivating environment.

\*Images shown are for representational purpose only and may differ from the actual property.



THE  
BAPU PARK  
A PROJECT BY BAPU & SILVER GROUP



## 'INDOOR ARENA'

A vibrant indoor play space designed for leisure, fun and relaxation.



THE  
BAPU PARK

A PROJECT BY BAPU & SILVER GROUP

## 'PRIME BANQUET AREA'

Host life's special moments in a space made for elegance and scale.

\*Images shown are for representational purpose only and may differ from the actual property.



THE  
BAPU PARK  
A PROJECT BY BAPU & SILVER GROUP

## 'LIBRARY AREA'

A calm retreat for readers, thinkers, and lifelong learners.



THE  
BAPU PARK

A PROJECT BY BAPU & SILVER GROUP

## 'SERENE POOL AREA'

An inviting pool area for relaxation and rejuvenation.



THE  
BAPU PARK

A PROJECT BY BAPU & SILVER GROUP

**'NATURE RETREAT'**

A harmonious blend of landscaped gardens and serene gazebos.

\*Images shown are for representational purpose only and may differ from the actual property.



THE  
BAPU PARK

A PROJECT BY BAPU & SILVER GROUP



## 'GREEN WALKWAY'

A calm walking green space that adds freshness to everyday living.

\*Images shown are for representational purpose only and may differ from the actual property.



THE  
BAPU PARK  
A PROJECT BY BAPU & SILVER GROUP



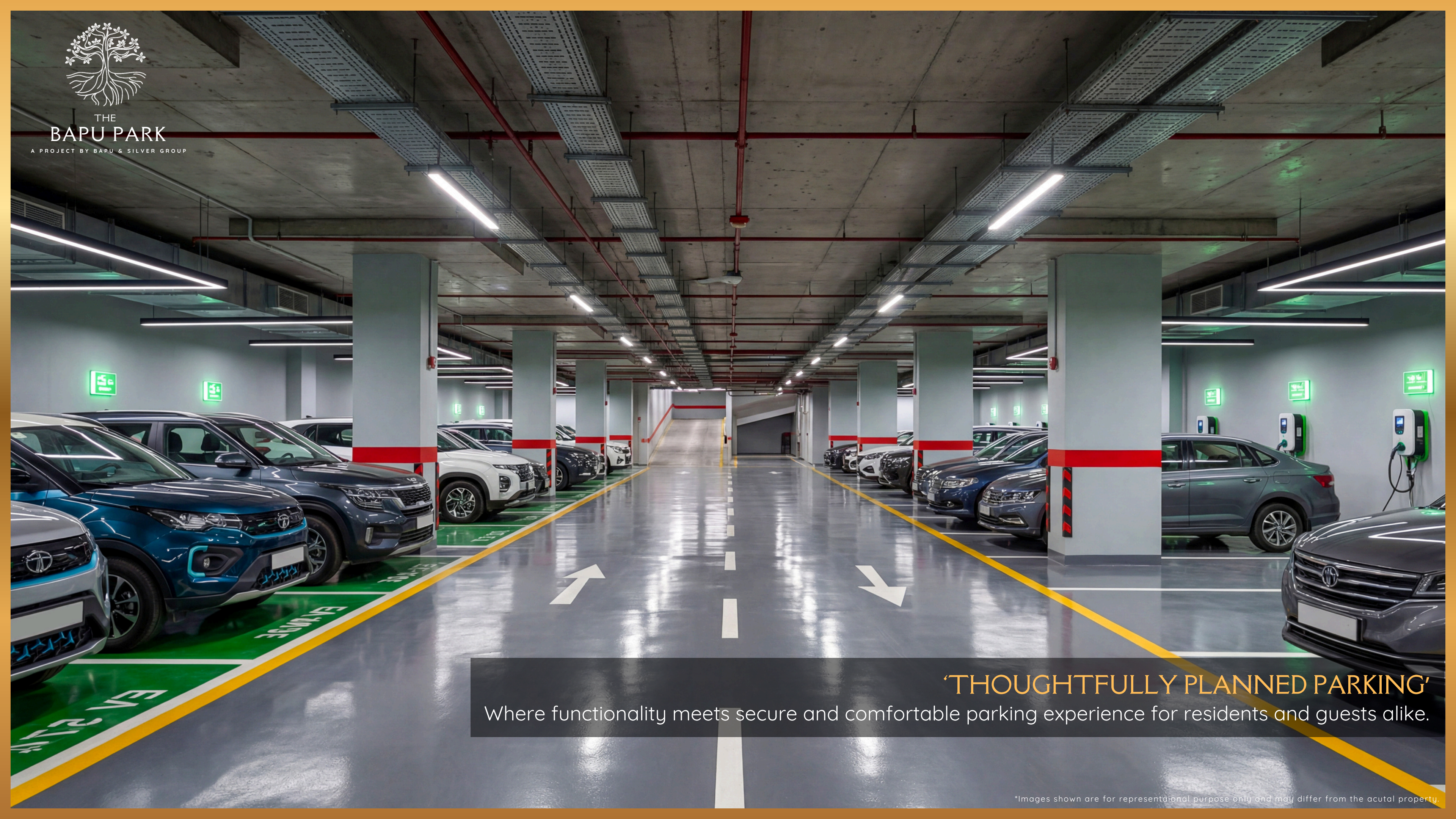
THE  
BAPU PARK  
A PROJECT BY BAPU & SILVER GROUP

**'SMART PARKING'**  
Efficient layout for stress-free parking, every day.

\*Images shown are for representational purpose only and may differ from the actual property.



THE  
BAPU PARK  
A PROJECT BY BAPU & SILVER GROUP



## 'THOUGHTFULLY PLANNED PARKING'

Where functionality meets secure and comfortable parking experience for residents and guests alike.

\*Images shown are for representational purpose only and may differ from the actual property.



THE  
BAPU PARK  
A PROJECT BY BAPU & SILVER GROUP



**'A MARKETPLACE BELOW, A SANCTUARY ABOVE'**

A thoughtfully designed retail zone welcomes you with cafés, essentials, and boutique outlets.

\*Images shown are for representational purpose only and may differ from the actual property.



# MASTER LAYOUT

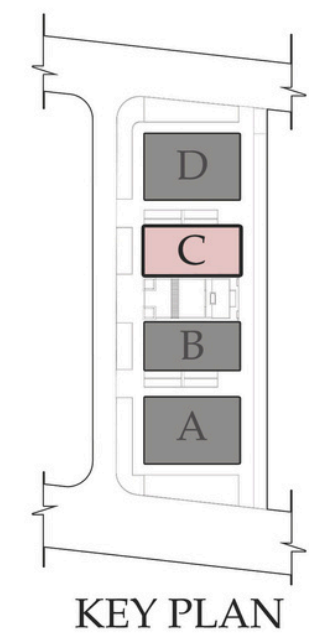
RERA REGISTRATION NO: RAJ/P/2025/4263

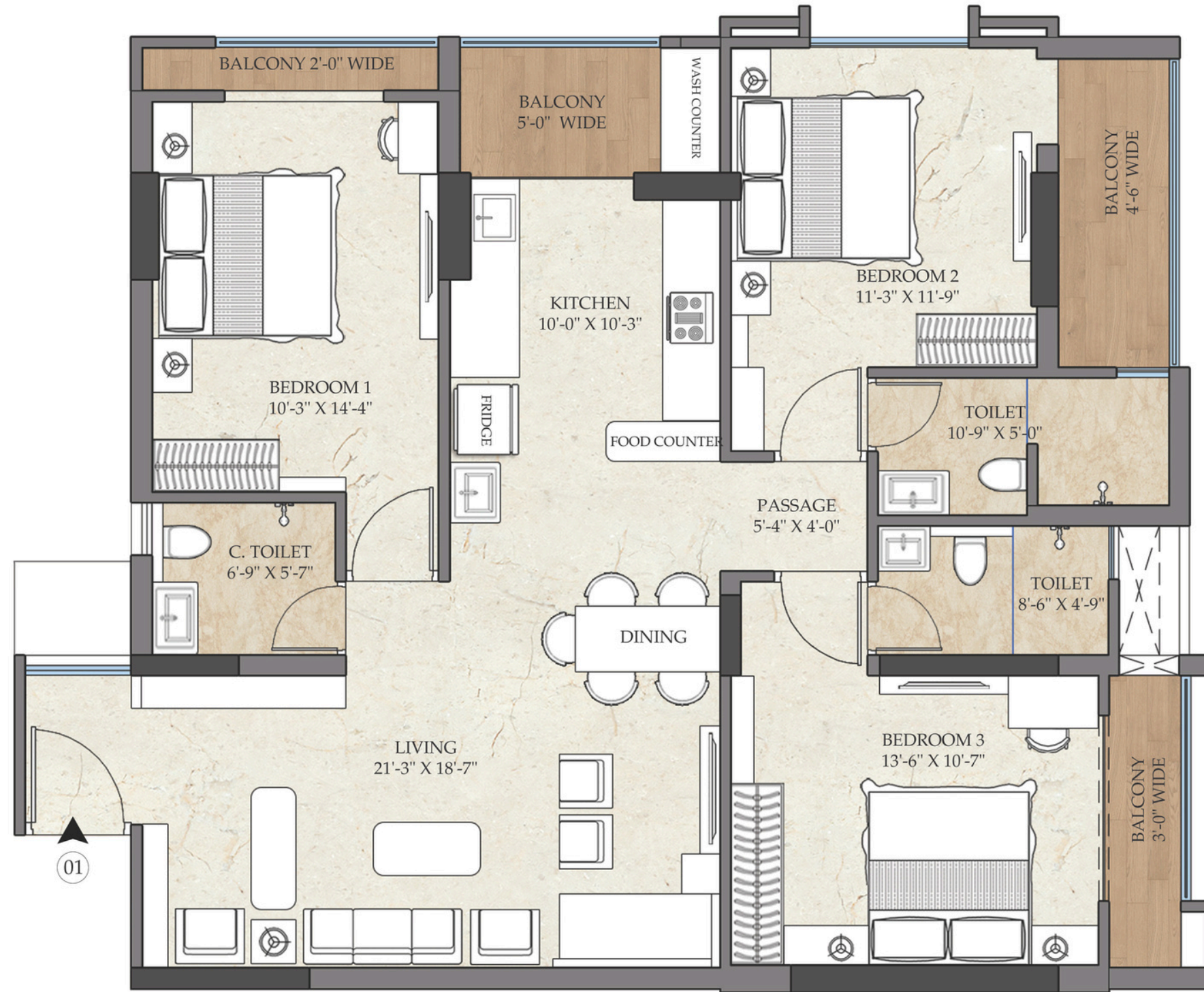




Units	Rera Carpet Area	Rera Balcony Area	Builtup Area	Super Builtup Area
Unit - 1 - 3BHK	101.30 sq.m	15.90 sq.m	1365 sq.ft	2047 sq.ft
Unit - 2 - 3BHK	101.50 sq.m	15.80 sq.m	1365 sq.ft	2047 sq.ft
Unit - 3 - 3BHK	95.30 sq.m	5.10 sq.m	1187 sq.ft	1780 sq.ft
Unit - 4 - 3BHK	101.50 sq.m	15.80 sq.m	1365 sq.ft	2047 sq.ft
Unit - 5 - 3BHK	101.30 sq.m	15.90 sq.m	1365 sq.ft	2047 sq.ft

C - BLOCK - TYPICAL FLOOR PLAN





Units	Rera Carpet Area	Rera Carpet Area	Builtup Area	Super Builtup Area
Unit - 1 - 3BHK	101.30 sq.m	15.90 sq.m	1365 sq.ft	2047 sq.ft

C - BLOCK - APT - 1



KEY PLAN



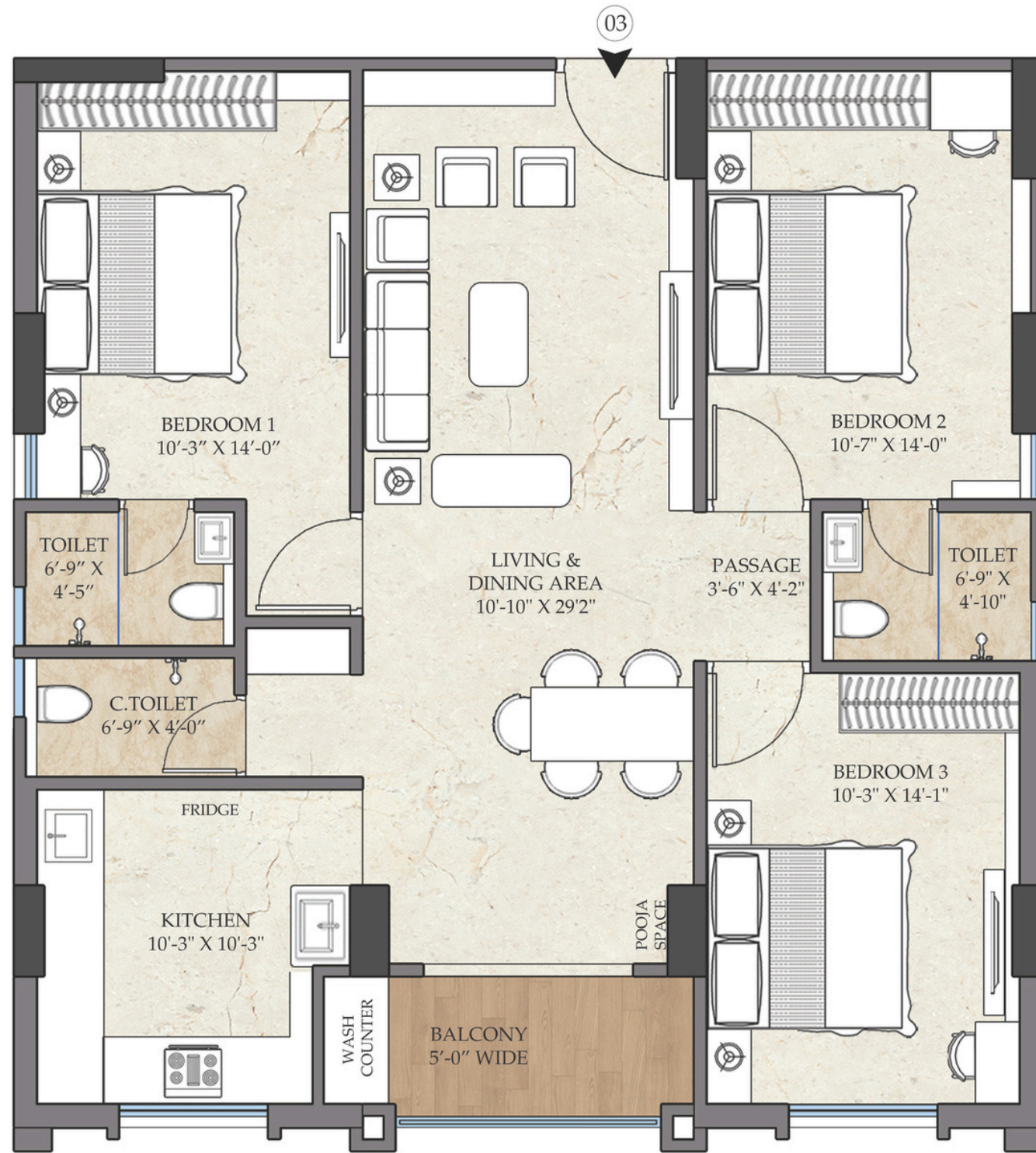


THE  
BAPU PARK  
A PROJECT BY BAPU BUILDCON & SILVER GROUP



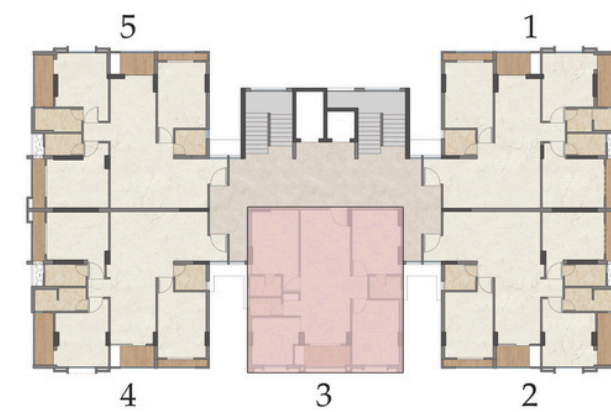
3BHK APARTMENT

\*Images shown are for representational purpose only and may differ from the actual property.



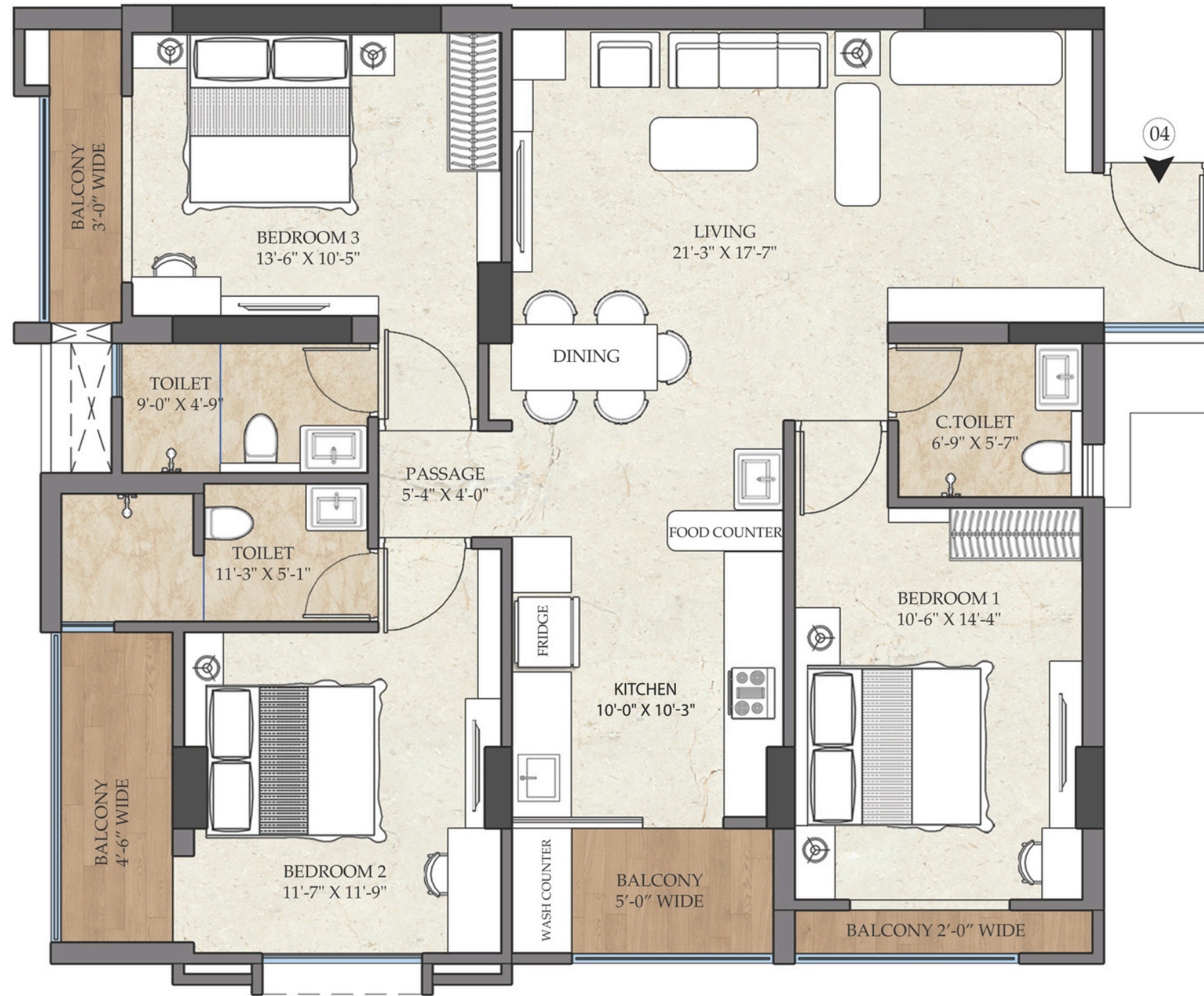
Units	Rera Carpet Area	Rera Carpet Area	Builtup Area	Super Builtup Area
Unit - 3 - 3BHK	95.30 sq.m	5.10 sq.m	1187 sq.ft	1780 sq.ft

C - BLOCK - APT - 3



KEY PLAN





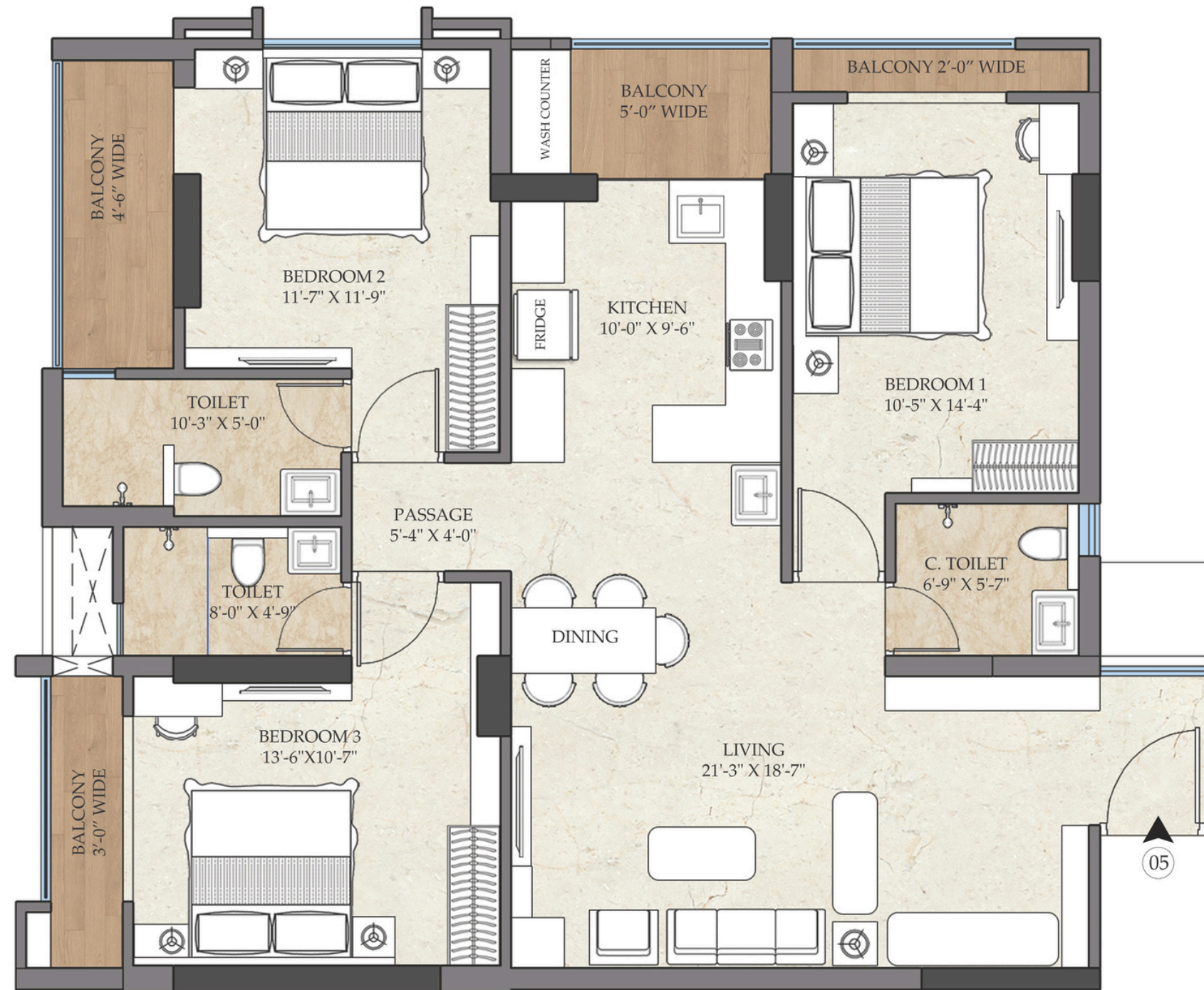
Units	Rera Carpet Area	Rera Carpet Area	Builtup Area	Super Builtup Area
Unit - 4 - 3BHK	101.50 sq.m	15.80 sq.m	1365 sq.ft	2047 sq.ft

**C - BLOCK - APT - 4**



**KEY PLAN**





Units	Rera Carpet Area	Rera Carpet Area	Builtup Area	Super Builtup Area
Unit - 5 - 3BHK	101.30 sq.m	15.90 sq.m	1365 sq.ft	2047 sq.ft

**C - BLOCK - APT - 5**



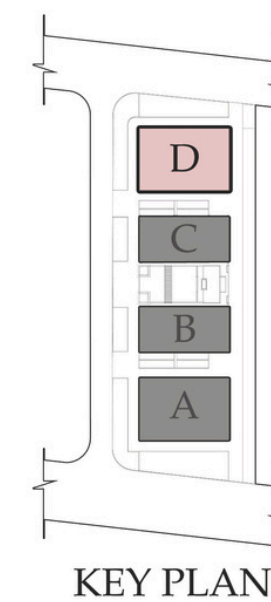
**KEY PLAN**





Units	Rera Carpet Area	Rera Balcony Area	Builtup Area	Super Builtup Area
Unit - 1 - 4BHK	179.10 sq.m	40.20 sq.m	2500 sq.ft	3750 sq.ft
Unit - 2 - 4BHK	175.80 sq.m	36.80 sq.m	2500 sq.ft	3750 sq.ft
Unit - 3 - 4BHK	185.10 sq.m	34.00 sq.m	2500 sq.ft	3750 sq.ft
Unit - 4 - 4BHK	183.40 sq.m	36.00 sq.m	2500 sq.ft	3750 sq.ft

D - BLOCK - TYPICAL FLOOR PLAN



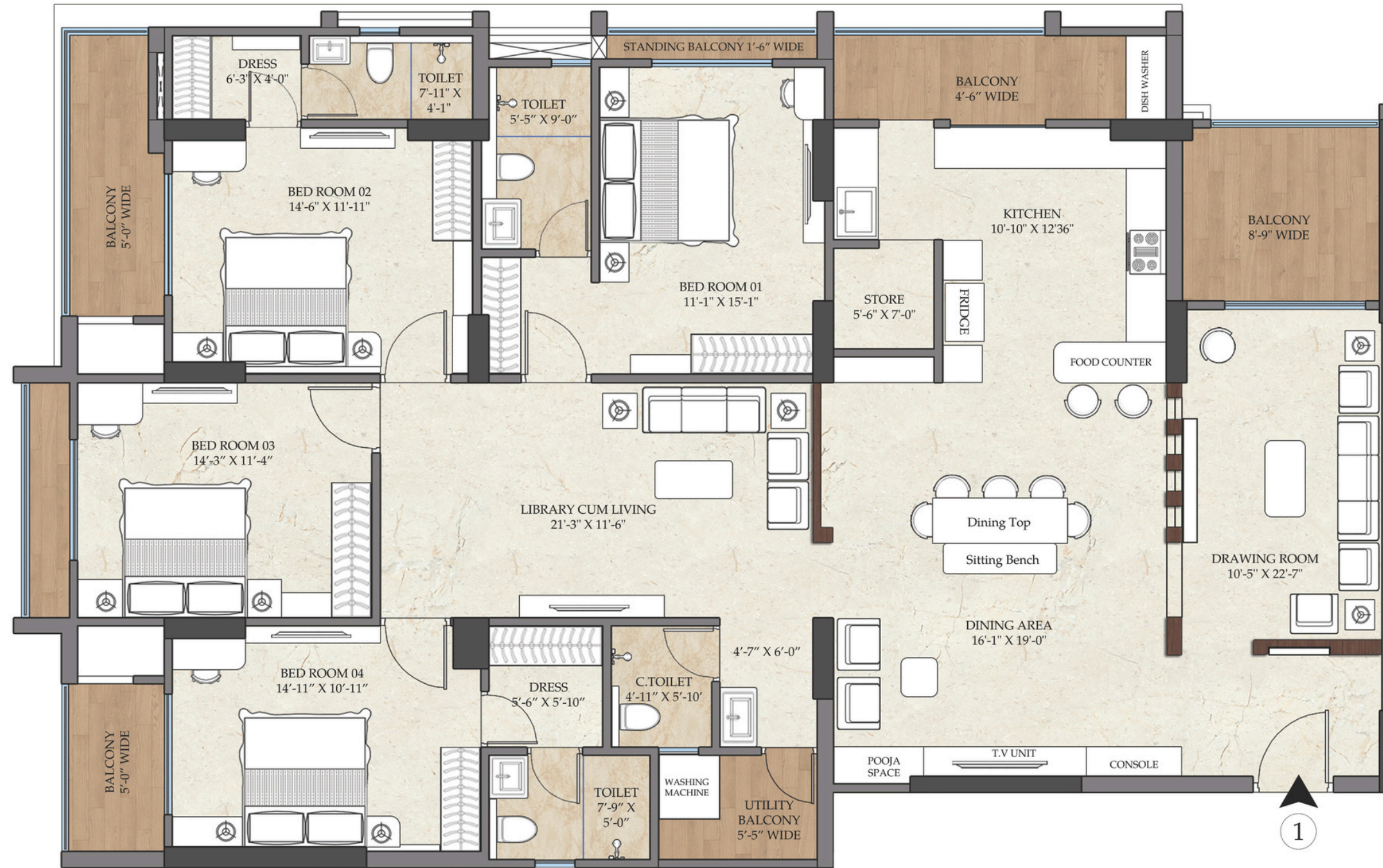


THE  
BAPU PARK  
A PROJECT BY BAPU BUILDCON & SILVER GROUP



4 BHK - LUXURIOUS APRTMENTS

\*Images shown are for representational purpose only and may differ from the actual property.



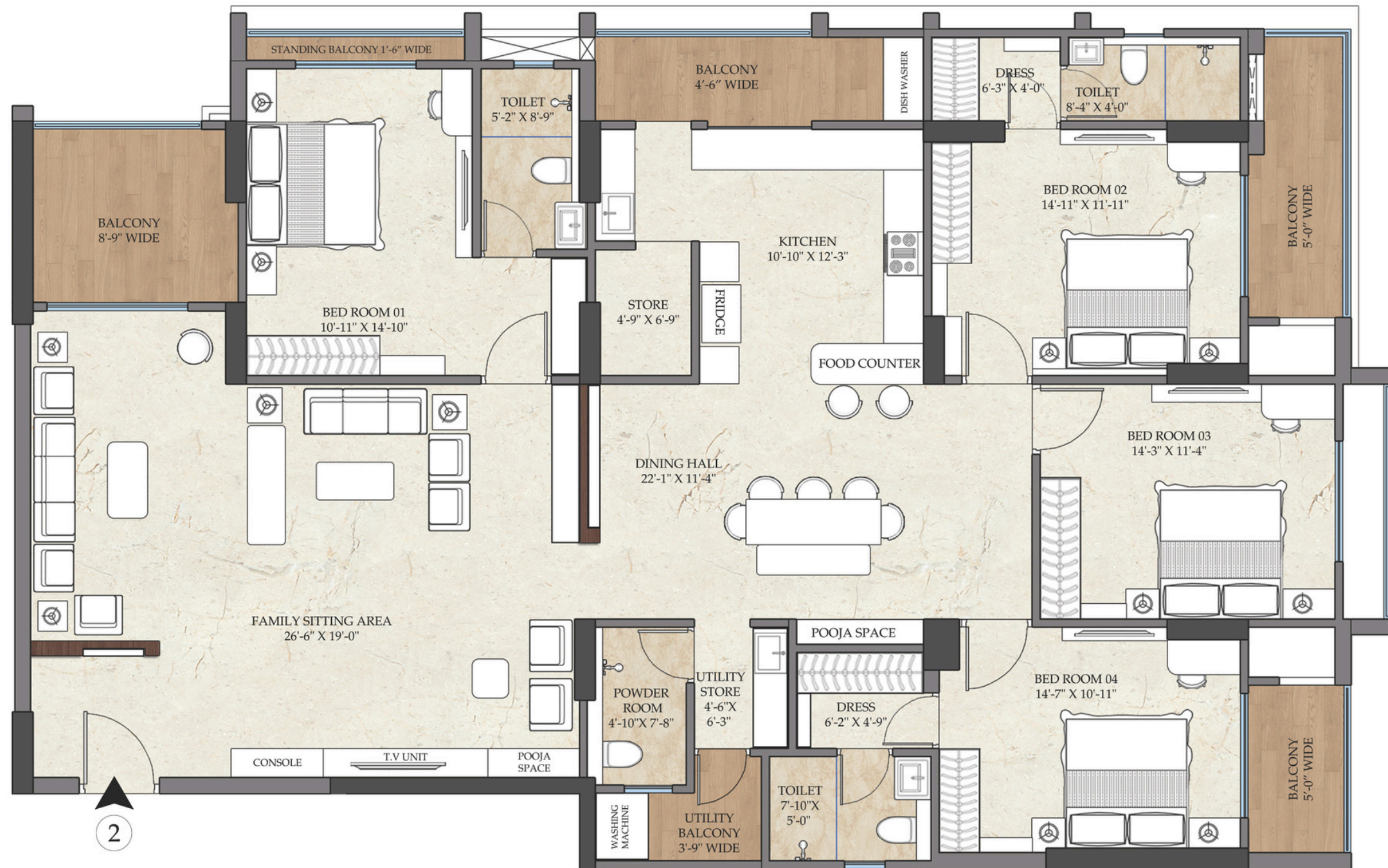
Units	Rera Carpet Area	Rera Carpet Area	Builtup Area	Super Builtup Area
Unit - 1 - 4BHK	179.10 sq.m	40.20 sq.m	2500 sq.ft	3750 sq.ft

### D - BLOCK - APT - 1



KEY PLAN





2

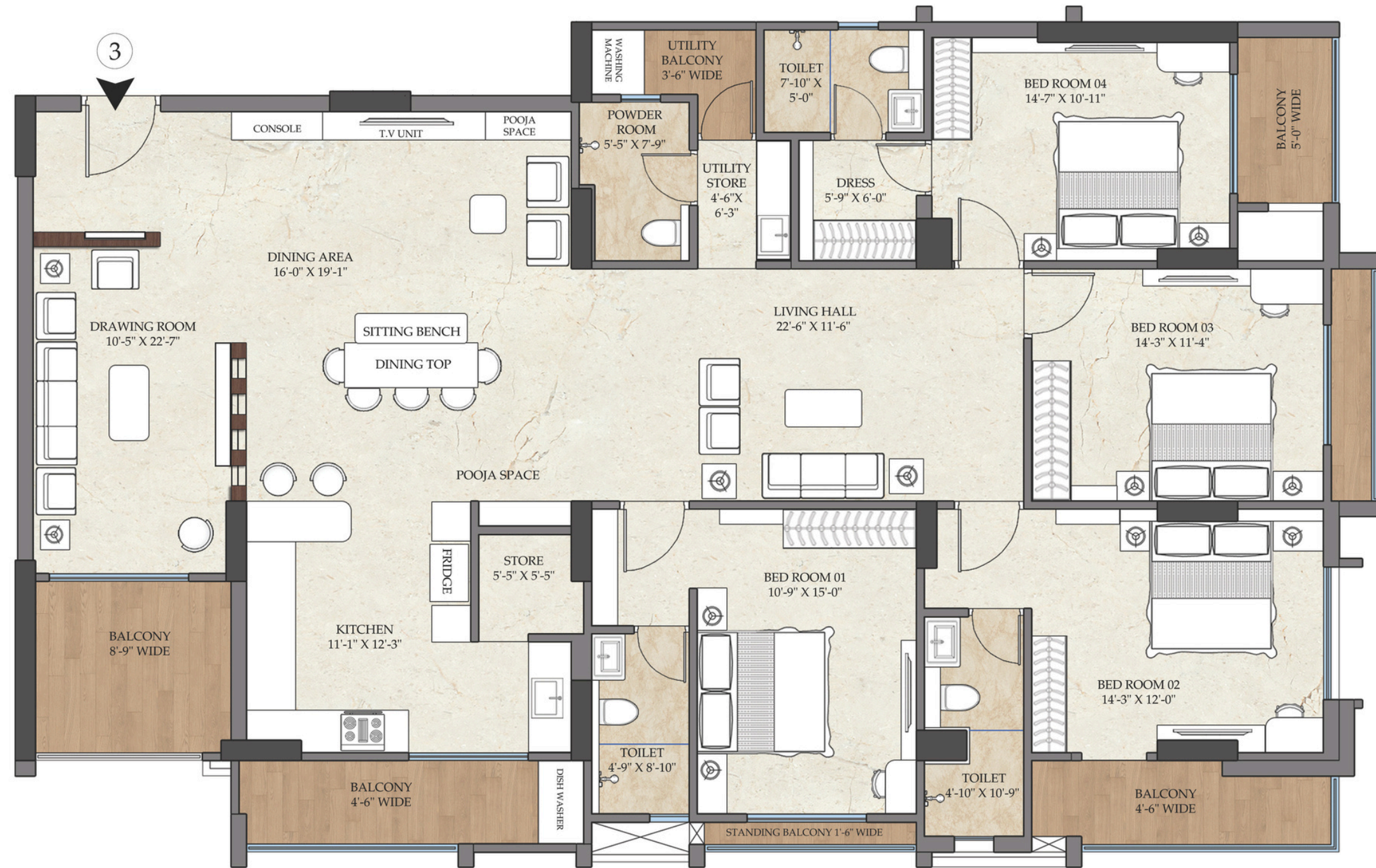
Units	Rera Carpet Area	Rera Carpet Area	Builtup Area	Super Builtup Area
Unit - 2 - 4BHK	175.80 sq.m	36.80 sq.m	2500 sq.ft	3750 sq.ft

D - BLOCK - APT - 2



KEY PLAN





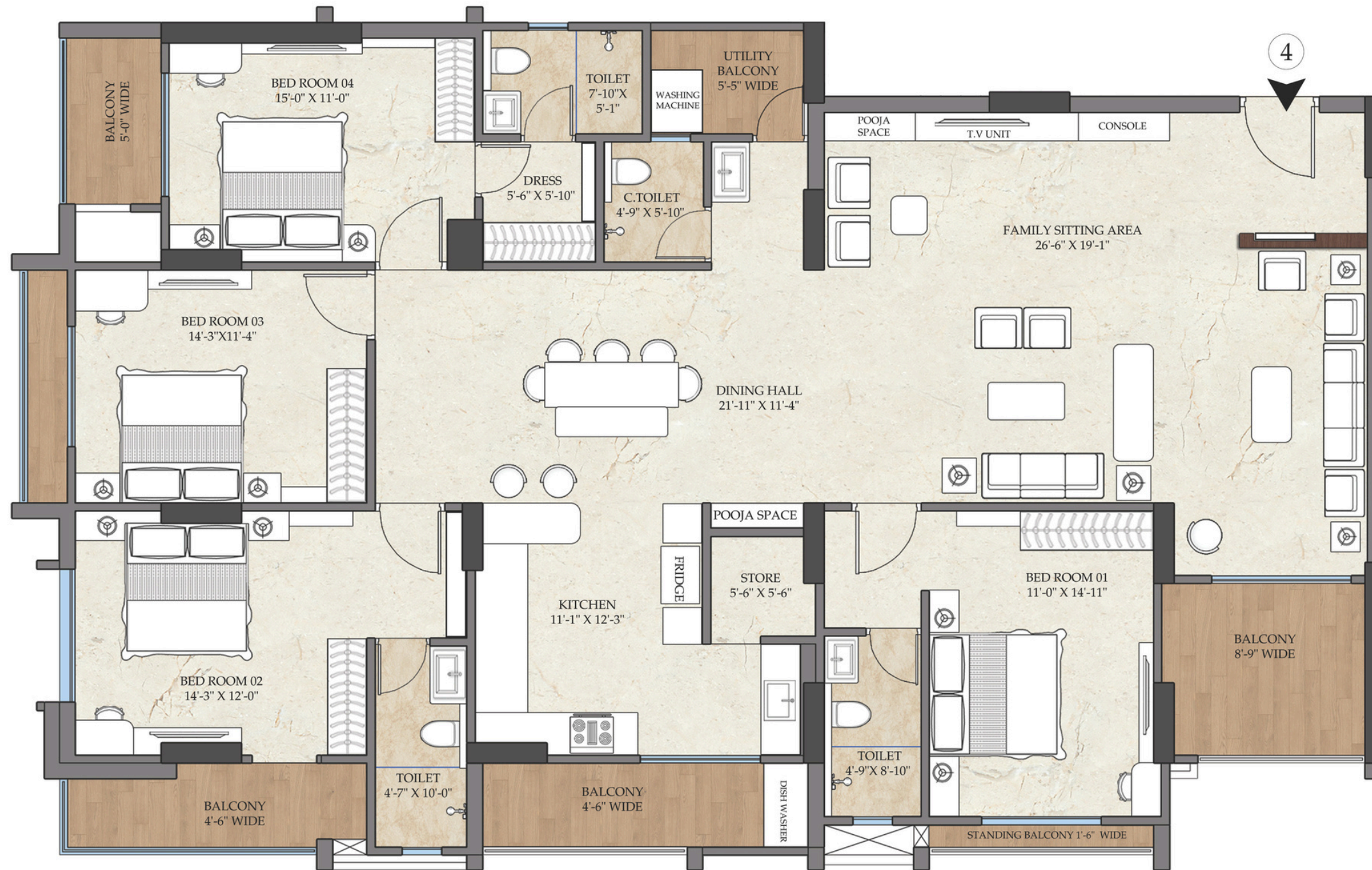
Units	Rera Carpet Area	Rera Carpet Area	Builtup Area	Super Builtup Area
Unit - 3 - 4BHK	185.10 sq.m	34.00 sq.m	2500 sq.ft	3750 sq.ft

**D - BLOCK - APT - 3**



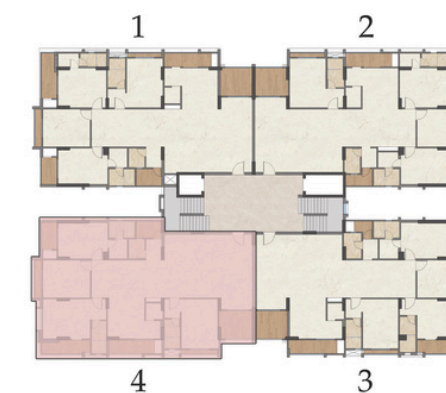
**KEY PLAN**





Units	Rera Carpet Area	Rera Carpet Area	Builtup Area	Super Builtup Area
Unit - 4 - 4BHK	183.40 sq.m	36.00 sq.m	2500 sq.ft	3750 sq.ft

### D - BLOCK - APT - 4



KEY PLAN





# THE BAPU PARK

A PROJECT BY BAPU & SILVER GROUP



**'TIMELESS ARCHITECTURE'**

Rooted in classic sensibilities and elevated by contemporary design.

\*Images shown are for representational purpose only and may differ from the actual property.



THE  
BAPU PARK  
A PROJECT BY BAPU BUILDCON & SILVER GROUP

## PREMIUM MATERIAL SPECIFICATIONS

- Steel: TATA Steel 550D/ SAIL 550D
- RMC: Ultratech/JK Laxmi
- Sand: Natural Sand from Disa Palanpur
- Bricks: Red Bricks of Premium Quality
- Cement: Ultratech/Wonder
- CP: Grohe
- Sanitary ware: Duravit
- Vitrified Tiles: Branded Premium Quality
- Flooring: Imported Marble in Hall, Drawing, Living, Kitchen
- Premium Quality Tiles in Bedrooms
- Railing: Designer MS Railing
- Wires: Finolex
- PVC & CPVC Pipes: Aashirwad
- Switches, Metal box & Flexi DB: Honeywell
- Kitchen: Modular Kitchen by Hettich/Hafley/Blum
- Doors: Premium Quality Flush doors (Main Door 40+mm, all doors 35+mm)
- Locks: Digital Main Door Lock & Mortise locks in rooms (Godrej/Yale)
- Stairs Seal: Premium Quality Granite
- Windows: System Aluminum (Gulf series)
- Elevator: Kone/Schindler
- MCBs: Hager

### 'BUILT WITH TRUSTED BRANDS'



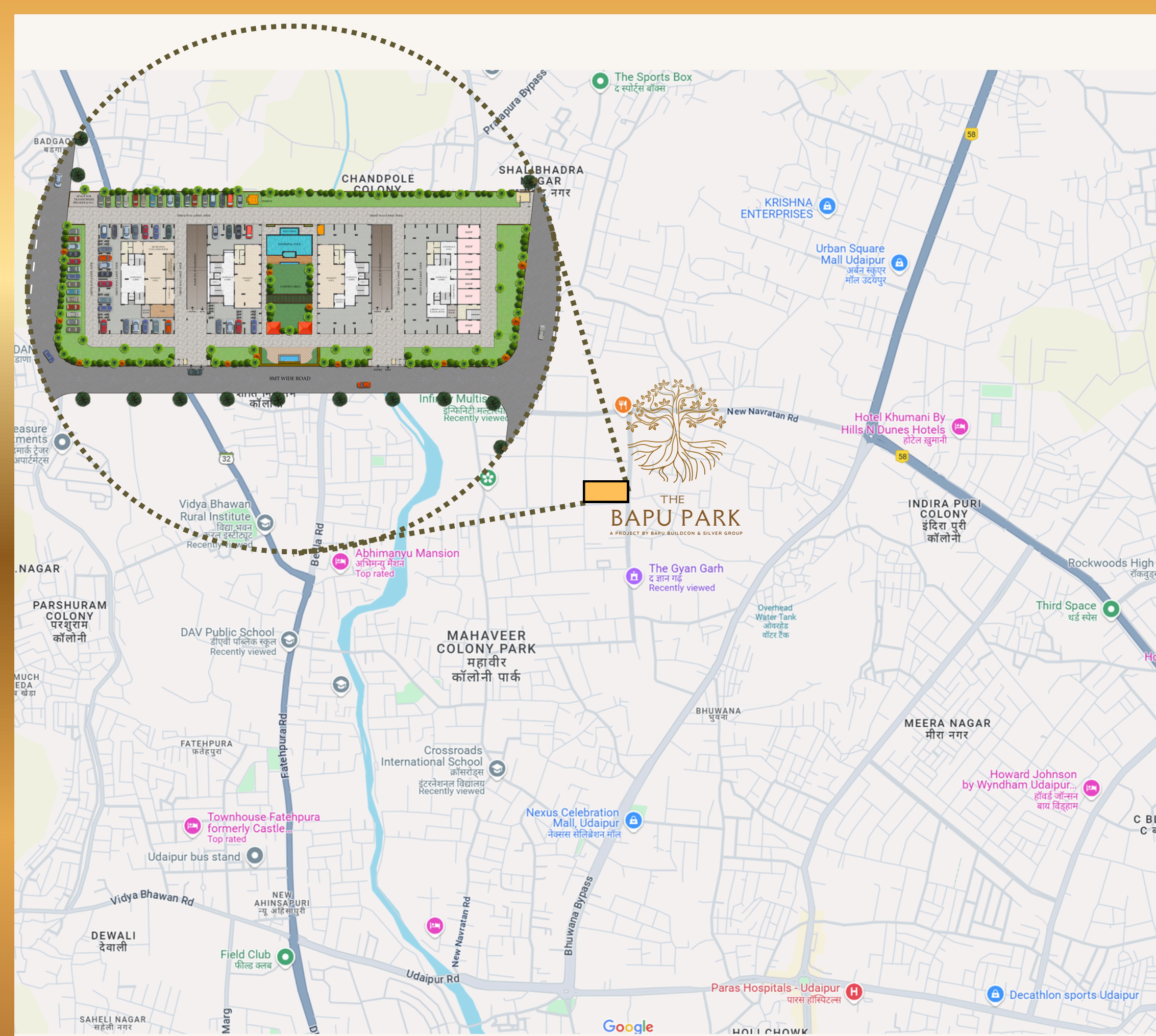
Designed for those who value time, ease & smart connectivity.

### Surroundings & Landmarks

- Kidney Care Hospitals 0.2 km.
- Chawat Sports Academy 0.3 km.
- The Gyan Garh Vatika 0.6 km.
- Infinity Mutli Sport Cafe 0.8 km.
- Mewar Hospital 1.0 km.
- Crossroads International School 2.0 km.
- Nexus Celebration Mall 2.0 km.
- Urban Square Mall 2.1 km.
- Vidya Bhawan Institue 2.7 km.

### Connectivity

- 100 feet Main Road 0.1 km.
- Bhuwana Circle 1.0 km.
- DPS, Udaipur 4.6 km.
- Pratapnagar Railway Station 8.7 km.
- Udaipur City Railway Station 9.3 km.
- Maharana Pratap Airport, Dabok 24 km.





THE  
**BAPU PARK**

A PROJECT BY BAPU BUILDCON & SILVER GROUP

**BOOKING OPENS**  
HURRY UP! BOOK NOW!

**3 BHK & 4 BHK**  
LUXURIOUS APARTMENTS



**BAPU BUILDCON**  
Trust | Luxury | Legacy

Site Address:

**The Bapu Park**

Near Silver Infinity Complex, Gyan Gardh Vatika  
Road, Navratn Complex, Bhuwana,  
Udaipur(Raj.)-313001

Contact & Email:

**+917023059522, +917023059422**

thebapupark@gmail.com

www.thebapupark.com